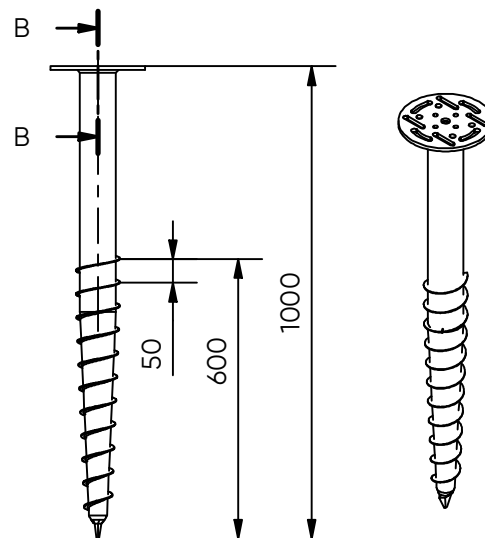


Ground Screw

Ø76 x 1000mm - M16

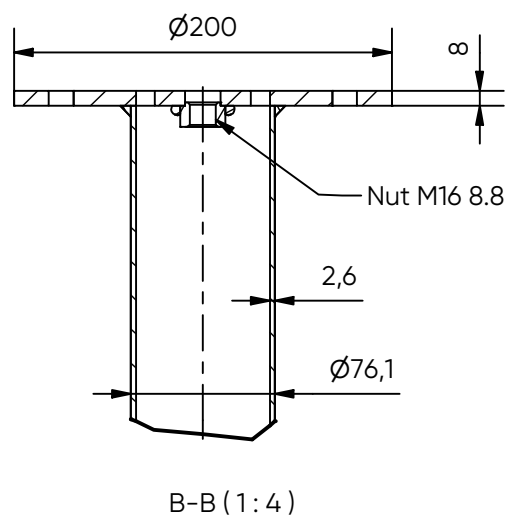
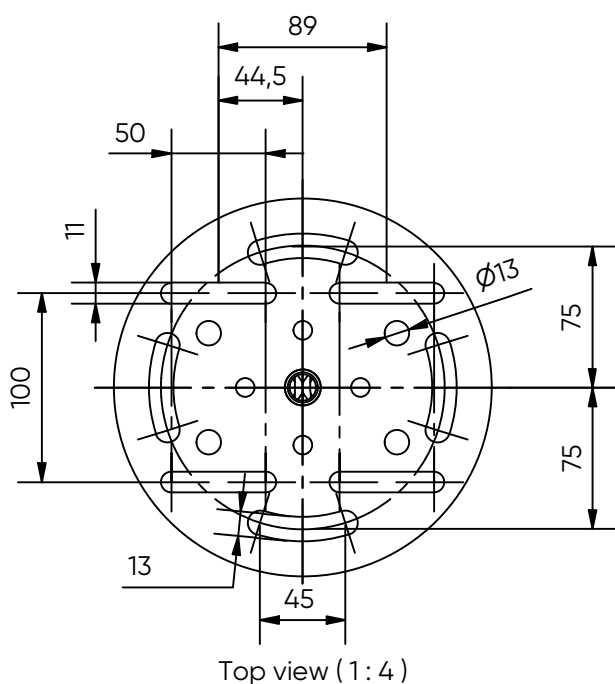


Art. No:	11041	
Weight:	6,0 kg	
Dimensions:	Pipe: 76,1 x 2,6 x 1000 mm Flange: 8,0 x 200 mm	
Materials:	Steel grade Pipe: S235 Steel grade Flange: S355 Surface treatment: Galvanized acc. to EN-ISO 1461	
Installation:	Electric machine 5.000Nm Art.No: 12001 Pneumatic machine 10.800Nm Art.No: 12005 Hydraulic machine 7.500Nm Art.No: 120950 Hydraulic machine 12.000Nm Art.No: 120960	
Use:	Light construction e.g. porches, garden rooms and modular homes.	
Fixation:	M16 , M12 , M10 Bolts	



Side view (1 : 16)

3D view (1 : 16)

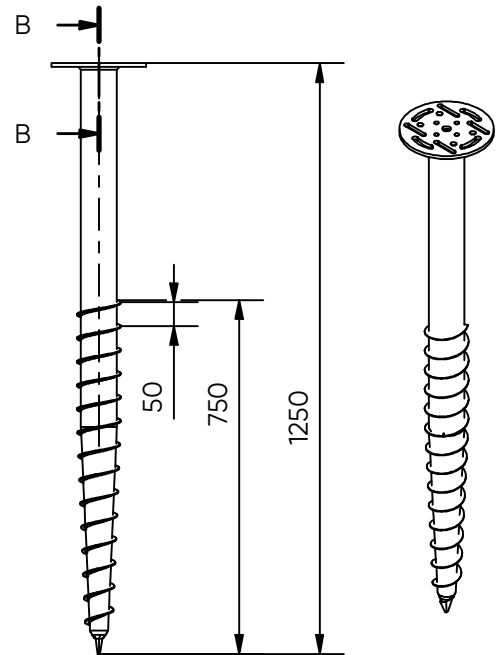


Ground Screw

Ø76 x 1250mm - M16

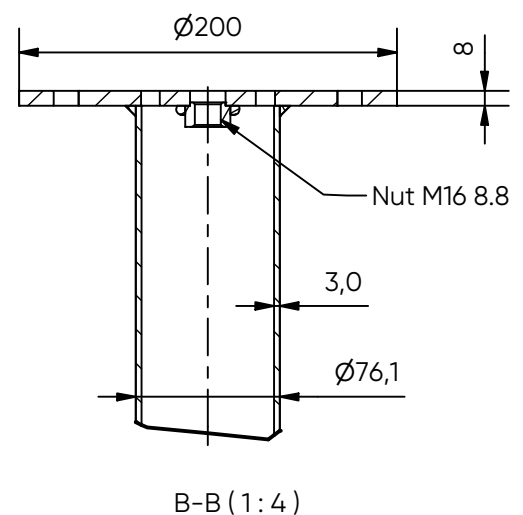
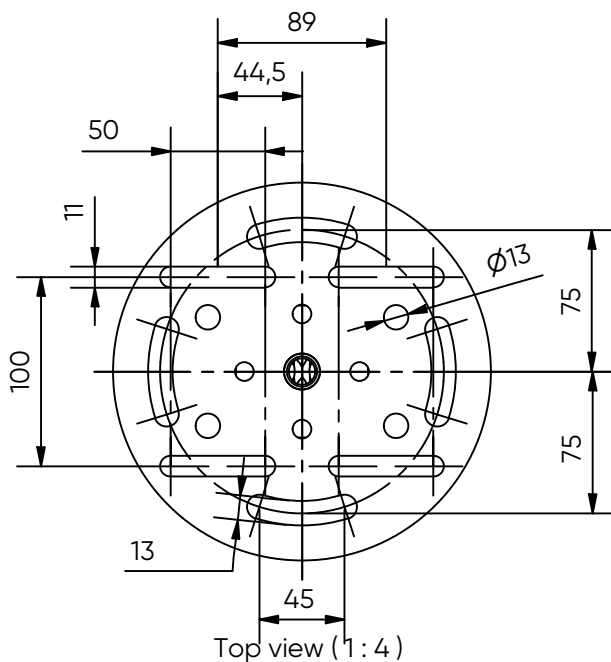


Art. No:	11042	
Weight:	8,1 kg	
Dimensions:	Pipe: 76,1 x 3 x 1250 mm Flange: 8,0 x 200 mm	
Materials:	Steel grade Pipe: S235 Steel grade Flange: S355 Surface treatment: Galvanized acc. to EN-ISO 1461	
Installation:	Electric machine 5.000Nm Art.No: 12001	Pneumatic machine 10.800Nm Art.No: 12005
	Hydraulic machine 7.500Nm Art.No: 120950	Hydraulic machine 12.000Nm Art.No: 120960
Use:	Light construction e.g. porches, garden rooms and modular homes.	
Fixation:	M16 , M12 , M10 Bolts	



Side view (1 : 16)

3D view (1 : 16)

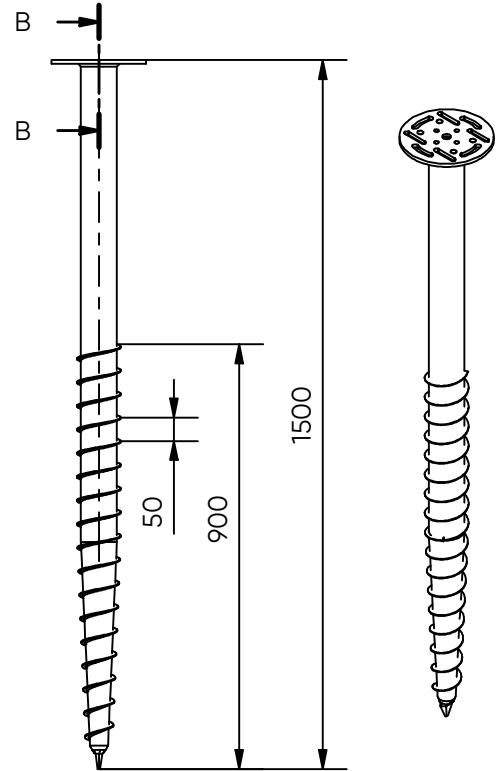


Ground Screw

Ø76 x 1500mm - M16

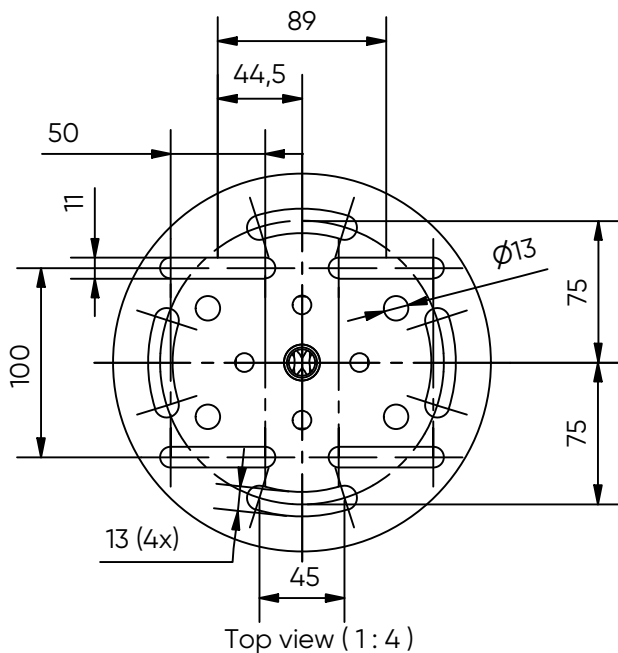


Art. No:	11043	
Weight:	9,6 kg	
Dimensions:	Pipe: 76,1 x 3 x 1500 mm Flange: 8,0 x 200 mm	
Materials:	Steel grade Pipe: S235 Steel grade Flange: S355 Surface treatment: Galvanized acc. to EN-ISO 1461	
Installation:	Electric machine 5.000Nm Art.No: 12001	Pneumatic machine 10.800Nm Art.No: 12005
	Hydraulic machine 7.500Nm Art.No: 120950	Hydraulic machine 12.000Nm Art.No: 120960
Use:	Light construction e.g. porches, garden rooms and modular homes.	
Fixation:	M16 , M12 , M10 Bolts	

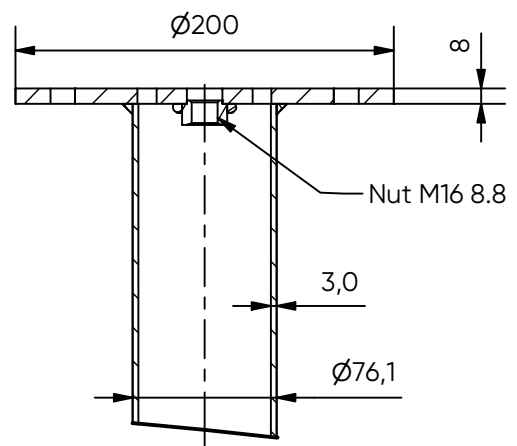


Side view (1 : 16)

3D view (1 : 16)



Top view (1 : 4)



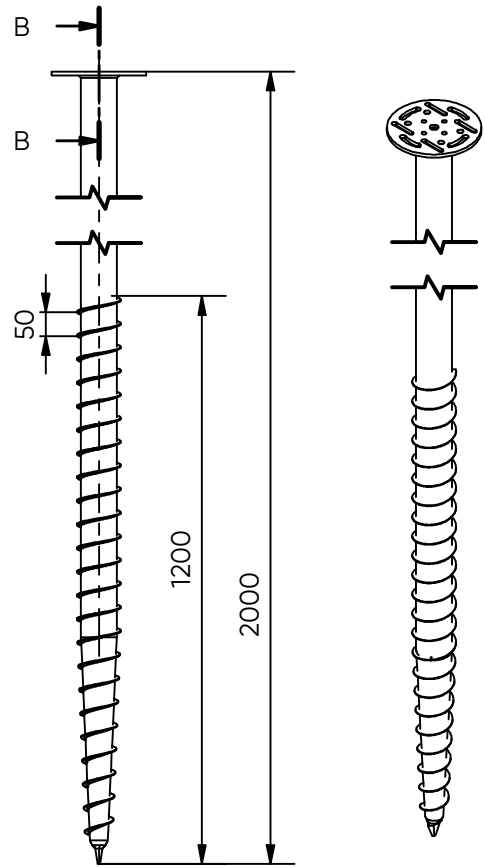
B-B (1 : 4)

Ground Screw

Ø76 x 2000mm - M16

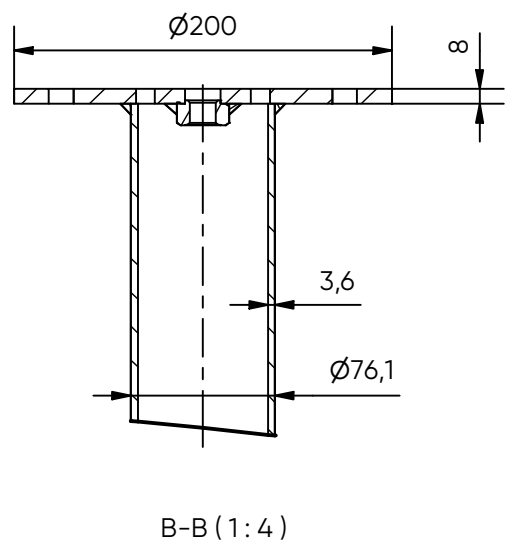
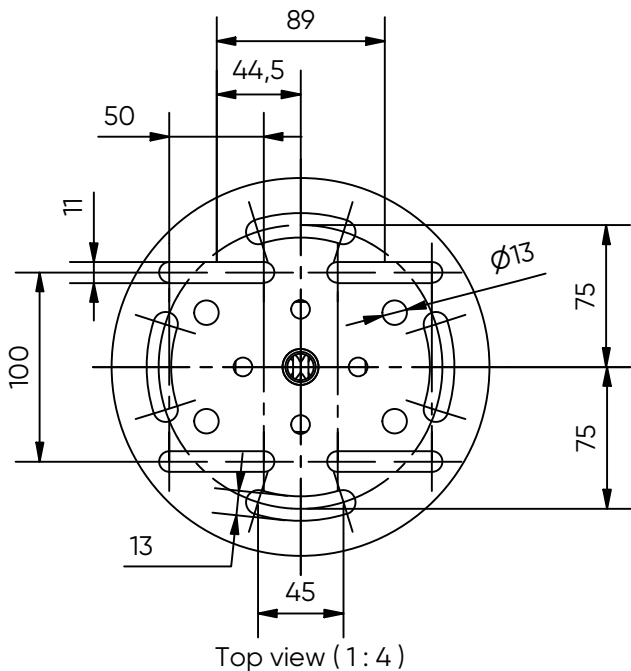


Art. No:	11044	
Weight:	14,5 kg	
Dimensions:	Pipe: 76,1 x 3,6 x 2000 mm Flange: 8,0 x 200 mm	
Materials:	Steel grade Pipe: S235 Steel grade Flange: S355 Surface treatment: Galvanized acc. to EN-ISO 1461	
Installation:	Electric machine 5.000Nm Art.No: 12001	Pneumatic machine 10.800Nm Art.No: 12005
	Hydraulic machine 7.500Nm Art.No: 120950	Hydraulic machine 12.000Nm Art.No: 120960
Use:	Light construction e.g. porches, garden rooms and modular homes.	
Fixation:	M16 , M12 , M10 Bolts	



Side view (1 : 16)

3D view (1 : 16)

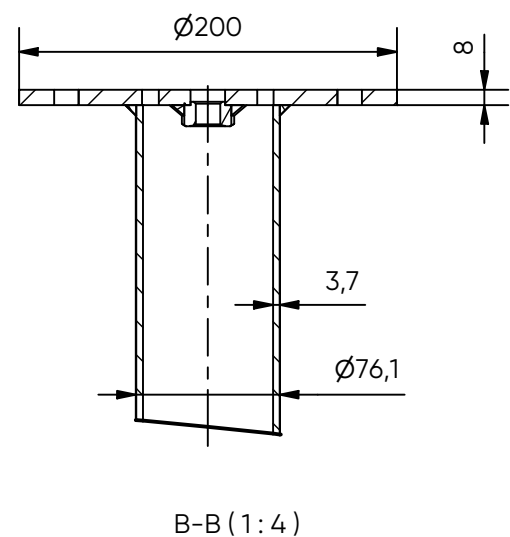
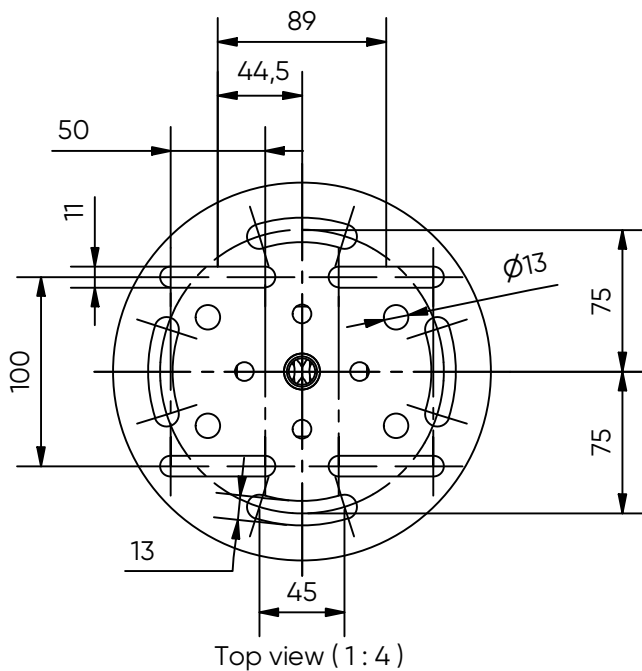
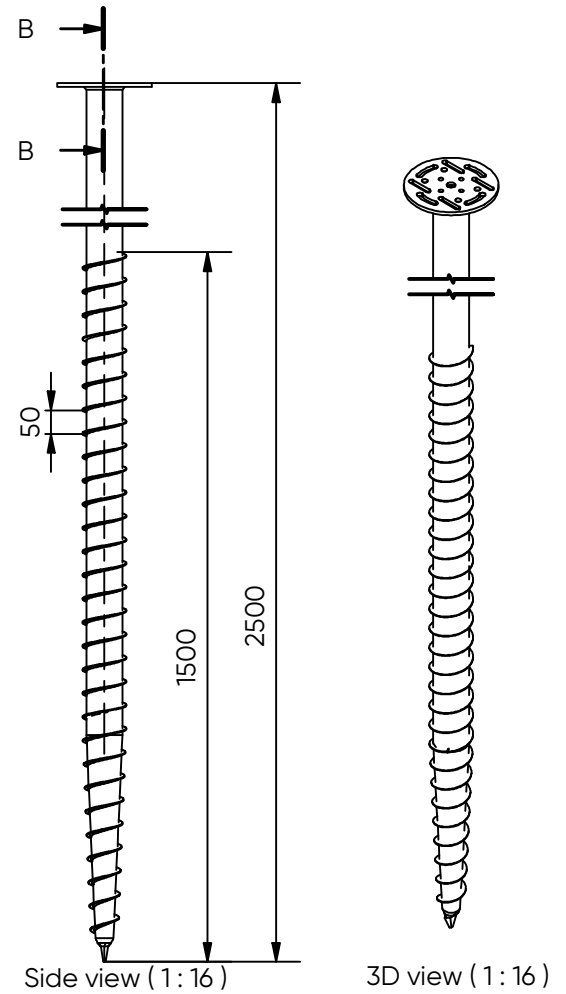


FIRST BASE Ground Screw

Ø76 x 2500mm - M16



Art. No:	11045	
Weight:	18,0 kg	
Dimensions:	Pipe: 76,1 x 3,6 x 2500 mm Flange: 8,0 x 200 mm	
Materials:	Steel grade Pipe: S235 Steel grade Flange: S355 Surface treatment: Galvanized acc. to EN-ISO 1461	
Installation:	Electric machine 5.000Nm Art.No: 12001	Pneumatic machine 10.800Nm Art.No: 12005
	Hydraulic machine 7.500Nm Art.No: 120950	Hydraulic machine 12.000Nm Art.No: 120960
Use:	Light construction e.g. porches, garden rooms and modular homes.	
Fixation:	M16 / M12 / M10 Bolts	



FIRST BASE Ground Screw

Ø76 x 3000mm - M16



Art. No:	11046
Weight:	21,4 kg
Dimensions:	Pipe: 76,1 x 3,6 x 3000mm Flange: 8,0 x 200 mm
Materials:	Steel grade Pipe: S235 Steel grade Flange: S355 Surface treatment: Galvanized acc. to EN-ISO 1461
Installation:	Electric machine 5.000Nm Art.No: 12001 Pneumatic machine 10.800Nm Art.No: 12005 Hydraulic machine 7.500Nm Art.No: 120950 Hydraulic machine 12.000Nm Art.No: 120960
Use:	Light construction e.g. porches, garden rooms and modular homes.
Fixation:	M16 , M12 , M10 Bolts

